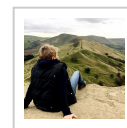


## Eyam and Stoney Middleton

### Figure of 8

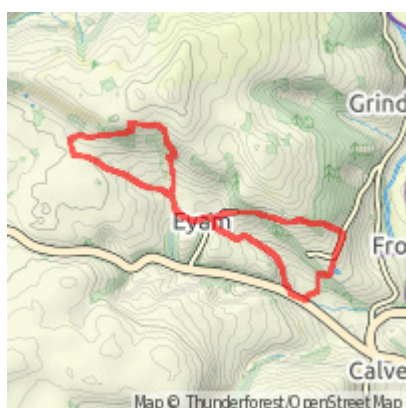
Let's Go Peak District II



## Route Summary

This walk is a Figure of 8, with the village of Eyam as the start, middle and end point. The first half takes you past the Riley Graves and down to Stoney Middleton, with fantastic views on the way. The second half takes you out of Eyam in the other direction, with splendid views from Eyam Edge.

## Route Overview



Category: Walking

Length: 9.030 km / 5.64 mi

Last Modified: 30th September 2019

Difficulty: Medium

Rating: Unrated

Surface: Undefined

Date Published: 30th September 2019

## Description

### Details

Distance: 5.5 miles

Time: 3-4 hours

Terrain: Country lanes and trails

Accessibility: Moderate, some inclines and uneven terrain, stiles and gates

Start and Finish Grid Reference: SK 22060

### Introduction

This walk is a Figure of 8, with the historic village of Eyam providing the start, middle and end point. You could do both circles with a break in the middle, or choose to complete either one on its own. The first half of the Figure of 8 takes you out of Eyam, past the Riley Graves and down to the pretty village of Stoney Middleton, taking in fantastic views along the way. The second half takes you out of Eyam in the other direction, offering splendid views over the village

from Eyam Edge.

This is a circular walk of just over 5 miles. For the most part it uses clearly-marked trails and grassy paths, with some country lanes. Be aware that there is a short section along a (quiet) road with no footpath. The route is undulating but has a few steep uphill sections. There are a few stiles and some gates. Parking is free in the village and there are tea rooms, cafes and pubs in Eyam for refreshments. There are public toilets at the halfway point. Allow 3-4 hours to complete this walk at a moderate pace, allowing for rest stops to take in the views, or more if you want to visit the historic sites in Eyam en route.

### The Walk

1. Park in the centre of the village, close to either the Village Green Café or Eyam Tea Rooms. There is usually plenty of free street parking but please park considerately. Walk out of the village in an easterly direction, turning to your left from the Village Green Café or to your right from Eyam Tea Rooms. Note the plaques on various buildings as you walk past, denoting buildings of significance in the history of the plague in Eyam. Where the road splits, take the left path to follow Riley Lane.
2. Continue following Riley Lane as it winds up a gentle hill through trees, ignoring a private track off to a farm on the left. After a short distance you will see the Riley Graves surrounded by a stone wall in a field on your left. These graves mark the burial spots of a family of six children and their father, all of whom died within the same week.
3. Continue following the track, with fabulous views over the Derwent Valley to your right. Look out for a Byway sign off to your right soon after the path has curved left, and follow the byway through a beautiful section of woodland. Continue straight on the main path, ignoring footpaths off.
4. Where the path emerges on to a quiet road, turn right, again with fabulous views ahead of you. As the road curves right look out for a Byway sign by a gate, and follow the byway down to the left of the road. Be aware that the terrain is uneven in places.
5. This pretty track passes through lovely beech woodland and down, past a cemetery on the left, into the village of Stoney Middleton. Follow the track as it becomes a road into the village. You will pass the spectacular church of St Martin's on your left. With a beautiful octagonal shape and dating from the 15th Century, it is well worth a visit. The 'Roman Bath House' on the right is actually much more modern, being a public bathing house from the 19th Century.
6. When you reach a T-junction, take the right hand road leading up and away from the main road. After approx. 200 metres, take a no-through-road on your right hand side, with an obvious chapel building visible ahead of you. Almost immediately the road splits again, and you should follow the left hand path signed Cliff Bottom, rather than the public footpath on The Fold. This pretty path takes you over a stile beside a gate, and up through fields that lead back to Eyam.
7. If you wish to take a short diversion to see the Boundary Stone, look out for a lane on the left past farm buildings as you approach the village. Follow this lane for approx. 500 metres through fields to find the Boundary

Stone ahead of you.

8. To continue on the walk, continue on the path as it bears right and returns you to the village of Eyam. You will pass the Lydgate Graves on your left, the burial spots of two villagers. Walk back down into the village and the starting point of your route.

9. To continue on the second half of the Figure of 8, turn left as you approach the village centre and follow Church Street. This takes you past the village school and the church of St Lawrence on your right, which is well worth a visit. The church dates from the 14th Century and houses a very interesting display about the history of the village. Look out for poignant plaques through this part of the village giving details about the inhabitants of the buildings during the time of the Plague.

10. Follow this road a little further and you will pass Eyam Hall on your right. This beautiful Jacobean Hall dates from 1672 and has been owned and managed by the same family for more than eleven generations. It is open to the public on certain days, see

13. If you wish to make a detour here to see Mompesson's Well, which was another key boundary marker during the time of the Plague in Eyam, turn right on Sir William Hill Road and follow it carefully (there is no footpath) for approx. 300 metres until you reach another road. Turn left and Mompesson's Well is almost immediately on the left hand side. Retrace your steps after your visit to continue the walk.

14. To continue the walk, turn left on Sir William Hill Road, looking out for the fine views on the left hand side over Eyam and beyond. After approx. 250 metres look out for a public footpath on the left that crosses a stile through a field and then over another stile. After the second stile, turn left and then almost immediately right, following a beautiful path down through woodland, again with lovely views to the left.

15. Follow the obvious path straight on down through the beech wood, over a field and through another stretch of woodland. In this second patch of woodland look out for a characterful ruined barn with an abandoned millstone lying close by.

16. Emerge from the woodland through a gate and head straight on across the field in front of you, keeping slightly to the left of two trees in the centre of the field. Cross over a stile and through another gate, always keeping straight on, in to the yard of a rather unattractive small minerals processing plant. Turn left just beyond the door marked Supervisor's Office on to the access road for the plant, soon emerging on to the main road again. Turn left on the (quiet) road and continue back down into the village of Eyam. Be aware that the road here has no footpath for a short stretch.

17. As before, look out for plaques as you enter Eyam that tell the story of some of the buildings in the times of the Plague. Follow this road as it winds back into the village, passing Eyam Hall and the church again, this time on your left, and return to your starting point.

## Waypoints

---



