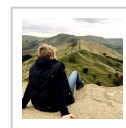


Tideswell and Miller's Dale Walk

Let's Go Peak District II

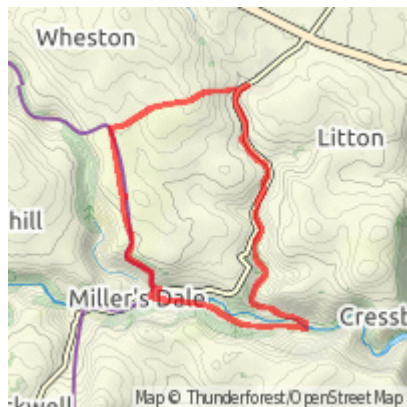


Route Summary



This lovely walk starts and ends in Tideswell village. It goes through beautiful Tideswell Dale, past Litton Mill and on to the Monsal Trail. From there to the hamlet of Miller's Dale on the River Wye, and through White Peak rolling fields to return on quiet lanes to Tideswell.

Route Overview



Category: Walking

Length: 9.470 km / 5.92 mi

Last Modified: 3rd October 2020

Difficulty: Medium

Rating: Unrated

Surface: Moderate

Date Published: 3rd October 2020

Description



Distance 6 miles

Time 3-4 hours

Terrain Field paths and country lanes

Accessibility Gates, uneven terrain

Start and End Point Grid Ref SK 15276 | Postcode SK17 8NU | [unusable.shaky.introduce](#)

Map Ordnance Survey Explorer OL24

Introduction : Tideswell and Miller's Dale Walk

This lovely walk starts and ends in the pretty Peak District village of **Tideswell**, which is very well served with cafes, pubs and shops for refreshments before or after your walk. The route takes you through beautiful Tideswell Dale, past historic **Litton Mill** and then on to the traffic-free **Monsal Trail**. From there you head to the pretty hamlet of Miller's Dale on the River Wye, with a lovely pub at the halfway point for a break if needed. From Miller's Dale it heads up through classic White Peak rolling fields to return along quiet country lanes to Tideswell.

This walk is dog-friendly (no stiles) and cow-free!

This is a walk of 6 miles. The terrain is uneven on the field paths and there are areas where the limestone rock underfoot can get slippery, especially after wet weather. There are gates but no stiles or squeeze stiles. You are very unlikely to encounter cows on this route. There is ample free street parking and public toilets at the start/end of the walk. Allow 3-4 hours to complete this walk at a moderate pace, allowing for rest stops to take in the views.

Directions : Tideswell and Miller's Dale Walk

Park in the centre of Tideswell where space allows close to the church, and walk out of the village in a southerly

direction on the B6049, keeping the Co-Op stores and then The Horse & Jockey pub on your right.

As you leave the village, look out for a small lane on your right, Richard Lane. Turn right on Richard Lane and then take a public footpath on the left after approx. 100 metres, just before a playground.

Walk along this wide, well-made path track through trees and fields. Where the track bears right and continues on through a wide farm gate, take the narrow grass footpath to the left instead (there is a charming, hand-painted 'footpath' sign to denote the path).

Continue following the grassy footpath through trees. The path widens into a track and, again, where the track continues straight on through a wide farm gate, instead take the narrow grass footpath to the left through a small hand gate.

The path is easy to follow as it winds down through trees. Where the path reaches the road at a small hand gate, go through the gate and turn right. Walk along the road with care on the pavement for approx 100 metres.

When you see a small lay-by on the opposite side of the road, cross over the road and take the signed footpath right through trees, with the road now on your right. This path takes you into the car park for Tideswell Dale, where there are public toilets and where there's often a refreshments van.

Walk straight on through the car park and into Tideswell Dale, with a pretty stream to your right. At a fork in the path marked with a wooden water vole sculpture you can take either branch of the fork.

Continue walking through Tideswell Dale. If you took the right hand fork at the sculpture just continue straight on, heading towards a wide gate. If you took the left hand fork, you'll need to cross the stream at a pretty bridge on your right to reach the main path and then turn left to walk towards the wide gate.

Go through the gate and continue following the well-marked path beside a stream, with towering limestone cliffs all around you.

When the path reaches a quiet lane, turn left and walk straight on into the pretty hamlet of Litton Mill. The route turns right here before reaching Litton Mill itself, but for a brief detour continue straight on to see this impressive building, which has a fascinating if tragic history.

To continue with the walk, turn right on a public footpath signed for Monsal Trail and Millers Dale before you reach the mill. The footpath crosses a bridge over the River Wye. Take care because the footpath is easy to miss – it runs between a stone house and a Water Treatment building, and is directly opposite a cottage called Monsal Cottage.

Immediately after crossing the bridge, the path heads up on stone steps over old mill workings and then zig-zags up a hill to reach the Monsal Trail.

On reaching the wide, well-made track of the Monsal Trail, turn right, signposted to Wye Dale. The track goes under a bridge and through the former railway cutting at Litton Mill. Continue straight on, ignoring a crossing path signed to Priestcliffe and Ravenstor. There are wonderful open views to your right towards Miller's Dale and back over Tideswell Dale.

On reaching a second crossroads of paths this time turn right, following the signs to Miller's Dale. The path is stony and uneven in places but easy to follow.

The path reaches the River Wye again at the bottom and crosses over the river by a small bridge. Follow the narrow path after the bridge to reach the pretty hamlet of Miller's Dale.

If you need refreshments at this stage, you can turn right on the lane for a brief detour to The Angler's Rest pub, which serves good food and is dog-friendly.

If not, turn left and then almost immediately right up a small set of stone steps to reach the main road (the B6049), emerging opposite a white wooden cottage. Turn right on the pavement alongside the road.

After only a few metres cross over the road with care to take a narrow lane up a hill on the left. The lane is signposted the Limestone Way. After approx. 150 metres take a public footpath on the left off the lane, again signposted the Limestone Way.

Follow this pretty path as it tracks through trees and past houses. Continue straight on, ignoring footpaths off.

Go through a wide farm gate at the side of Monk's Retreat holiday cottages and enter a farmyard. Turn left at the fork in the tracks, taking the wide gate beside the farmhouse, still signposted the Limestone Way.

Follow this wide grassy track, with magnificent views over Miller's Dale to the left. The track continues between two stone walls and eventually narrows, with fields on both sides.

Immediately after a metal gate the track forks, and you should take the left hand fork. Continue following the well-marked track between the stone walls, ignoring footpaths off, with wonderful White Peak scenery all around you. Although there may be cows grazing in the fields on both sides, the path continues at all times between two stone walls.

Eventually the track comes to a crossroads with a quiet country road, with a farmhouse immediately opposite. Turn right on the road. Be aware that there is no pavement but the road is wide and usually not busy. Continue following this quiet road all the way back into Tideswell village.

On reaching the edge of the village, continue down past houses to reach a T-junction. Turn left at the T-junction (on to Sherwood Road) and then almost immediately right (on to Parke Road). Continue down Parke Road until you emerge at the bottom to find yourself back in the centre of Tideswell village, where you can retrace your steps to your parked car.

Waypoints

